

Kildwick Church of England Primary School

Priest Bank Road, Kildwick, BD20 9BH

Tel:01535 633682

www.kildwickceschool.org



Newsletter

13th November 2020

Dear Parents and Carers,

It has been wonderful to see all the children in their non-uniform today, especially as the money raised is for a wonderful cause. Thank you so much for your kind donations, we raised £230.50!

Thanks for all your responses with regard to the continued running of our before and after school club. We have made some immediate decisions to try and reduce our outgoings. Two members of staff have been furloughed and we will now be operating club from school. We are hopeful that the current circumstances will be for a short period of time only.

I would like to draw your attention to a social media letter that I sent to all parents this week. This does particularly apply to Upper Key stage Two but my advice would be to keep yourself updated regularly and to set your expectations early.

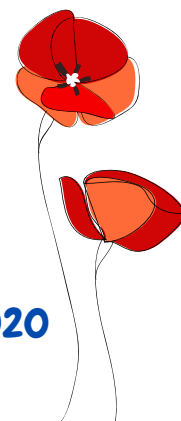
Linked to this, it is anti-bullying week next week and teachers will be facilitating lessons around the theme 'United Against Bullying'. Children will also be learning about online safety.

Usually at this time of the year the children are busy selling poppies in aid of the British Legion's Poppy Appeal. This year we haven't received any poppies presumably due to Coronavirus. However, we have been busy making our own poppies, took part in a recorded service led by Reverend Rob from South Craven Baptist Church and observed the two minute silence at 11am.

Have a great weekend!

Mr T. Whitehead
Headteacher

Mr T. Whitehead
Headteacher



13th November 2020



Positive Covid Test

If you receive a positive Covid test out of school hours please email the Headteacher ASAP.

headteacher@kildwickce.uk

Thanks

Birthdays

TOMMY, C3
ISLA P, C3
LEWIS, C4
LOUIE, C4



Remembrance Day 2020

Sports Clubs

Due to DfE guidelines both the running club and Kanga Sport club have been postponed until further notice.





Santa!

We are aware that lots of children may not be able to have their annual trip to see Santa this year due to the covid restrictions. We are hoping that Santa may drive past school and leave a present for the children in the playground (they may just accidentally see him!) We were wondering if any parents or relatives would be able to assist with transport suitable for Santa and perhaps playing the role of Santa and his helpers? Any ideas and support would be much appreciated. We really want to do everything we can to make this a special Christmas for the children.



Staff Shoutout!

A big thank you to all the staff in school who have had a really tough start to this half term. This week lots of the Teachers have been teaching children in school whilst supporting children at home too. We must also remember that they have their own families and worries at this really difficult time. We have a very dedicated staff team who always work together and prioritise the children and our school no matter what. Thank you to each and every one of you.



EYFS Garden Area

We are currently working on improving the EYFS garden area. We need four or five wooden pallets, please let Miss Akrigg know if you have any. Sarah, who is doing the work, will be here on a Monday and Friday afternoon. If anyone is able to help her we would be able to have one person working alongside her. This will not involve any contact with children and you would not need to come into the school building. Again, please let Miss Akrigg know if you can help.



Reverse Advent, w/c 16th Nov

We know that lots of families are facing tough times and we want to support our local community. We will be collecting for Skipton food bank again w/c 16th November. For the past few years we have had a reverse advent when children are given a day in December to bring in donations for the food bank.



So that we can get your donations to them before their Christmas deadline we are going to do things differently this year. We are asking that children bring in one or more of the items from the list attached. Children can wear non uniform on the day they choose to bring their donations in.

Thank you for all your generosity and support.

It has been a tough year, help us bring some
light and joy to others this Christmas

Tinned Gammon/Lean Ham
Tinned Chicken
Stuffing Mix
Gravy Mix
Christmas Puddings - All sizes
Custard Packets
Christmas Cake Bars
Sweet Biscuits
Savoury Biscuits/Crackers
Chocolates
Chocolate Selection Packs
Hot Chocolate
Mince Pies
Toiletries for Men, Women, Families and Children
Christmas Crackers

Food donations welcome until Friday 4th December

St Andrew's Church, Newmarket Street, Skipton, BD23 2JE

Financial donation always welcome! www.justgiving.com/campaign/SkiptonFoodBankChristmas2020



Lamppost outside school

It has come to my attention that the lamp outside the main gate is not working. I have contacted the Parish Council and NYCC and apparently this is not a simple bulb issue but a problem underground. This will, unfortunately, take longer than initially thought. I have contacted Northern Power Grid to try to speed this process up.

Parent Present Letters ~ Kingfishers

Dear parents and carers,

Do you want to help Kildwick this Christmas? Well please kindly donate a present to the parent Present Stall. Not only can you donate to Kildwick school, it also helps your children work better because we can use the money for school accessories. It is the best stall of the year because the children get to watch the teachers wrap presents and they get to give presents to their lovely parents.

please listen to what I have said

kind regards

from Kingfisher class

Dear parents and carers,

Do you want to help children all over the school? If you would like to, here's your chance! Can you lovely parents donate a present? Do you know the most popular stall is the parent Present stall at the fair because it's

really fun for children! It's fun because they get to boss the teachers around by wrapping the presents and choosing the wrapping paper!

Could you please donate a present? Not only your child, every child in the whole school will be happy! It also makes the children in a festive spirit too! It will help children and school.

Kind regards
Kingfisher class

PS: Hope you have understood and you will think about it!

Thank you to those of you who have already donated items for the parent presents. The children in Kingfisher class have been writing persuasive letters to encourage you to send more in!

This is always really popular with the children and it's lovely to see how much they enjoy choosing and giving gifts to their loved ones!

An illustration of four children painting a large white sign on a stone wall. A boy is at the top, a girl is on a ladder, and two other children are on the ground with paint buckets. Bunting flags are strung across the top.

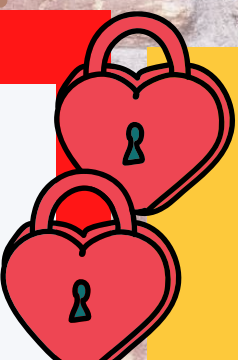
The PTA now have a **NEW** open Facebook Group which can be found [here](#). This will not include any photos of children or their names, and group admins will approve all posts.

PTA News

An illustration of green holly leaves with red berries.

RAFFLE PRIZES

We will be sending out raffle tickets next week for you to buy and also for you to sell to friends and family. It isn't too late to donate a raffle prize. Any local businesses donating will be given a mention on the PTA Facebook page. Please let us know ASAP if you can donate a prize.

An illustration of two red heart-shaped padlocks, one above the other.

A reminder you can purchase a lockdown heart by making payment on Parent Pay.

A big thank you goes to Emmie Dowgill, her Mum and Grandma who have made and packaged nearly 150 of these! I am sure friends and relatives who receive these will really appreciate such a thoughtful gesture.





Class Awards

Class 1 – Robins

ZAK
AOIFE

EMMI-LOUISE
LAWRENCE
MADDIE

DEXTER F
IVY



Class 2 – Swallows

GEORGIA
SIENNA

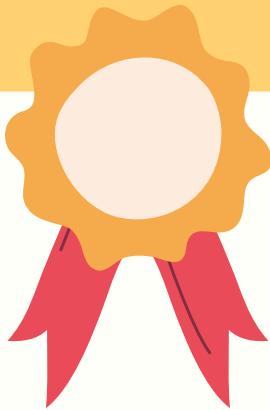
RALPH
GEORGE W

MAX

Class 3 – Kingfishers

IZABEL
LOUIE K
MOLLY

SETH



Class 4 – Owls

ISABELLA
JACK
MIA

Class 5 – Eagles

ZACH
ARCHIE
IZZY

